

## Level Compensator

### Features and Strengths

The Vtec level compensator is used to compensate for differences in height on the surface of the material that is to be lifted. The advantages being a more reliable and less precise pick up position when handling product that may be less consistent in its shape, size and position. The level compensator also provides a degree of shock absorption should this be required. The level compensator comes in configurations with varying sizes of spring and stroke.

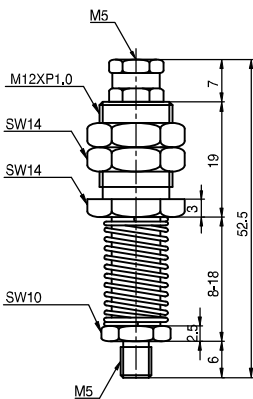


### ■ 5-Series

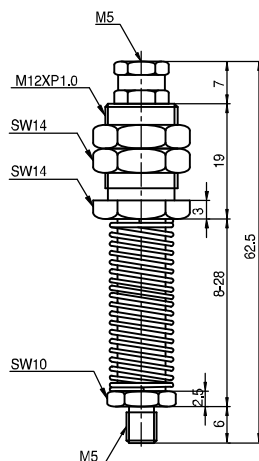
#### Dimensional Information

Model	Thread Size	Stroke (mm)	Weight (g)
L510T	M5-male	10	30
L520T	M5-male	20	33
L510	M5-male	10	33
L520	M5-male	20	36
L506TX	VB6X, VU1.5X, VU2X, VU4X	6	12
L506TS	VU10, VU15, VF15, VB10, VB12, VB15	6	12
L506TU	VU4, VU6, VU8, VB5, VB8	6	11
L506TM	VU2, VU3	6	11
L510LTX	VB6X, VU1.5X, VU2X, VU4X	10	19.5
L510LTS	VU10, VU15, VF15, VB10, VB12, VB15	10	19.8
L510LTU	VU4, VU6, VU8, VB5, VB8	10	19.2
L510LTM	VU2, VU3	10	19
L507T	M5-female	7	17
L515T	M5-female	15	20
L520TF	M5-female	20	20

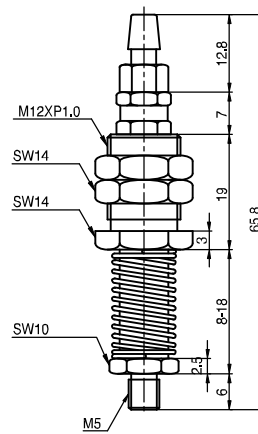
**L510T**



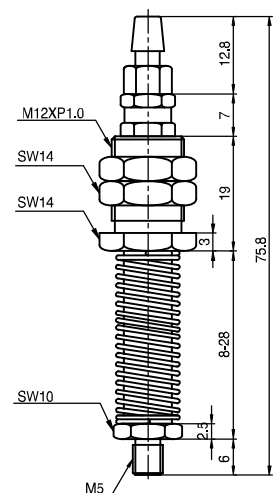
**L520T**



**L510**



**L520**

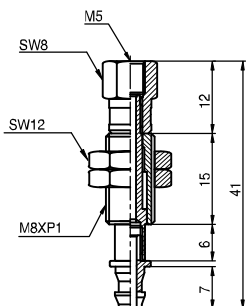


[ Measure unit : mm ]

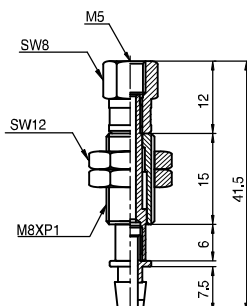
## Dimensional Information

SUCTION  
CUPS

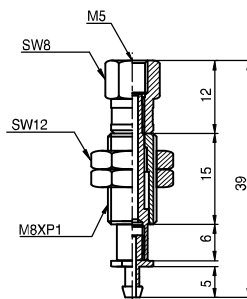
**L506TX**



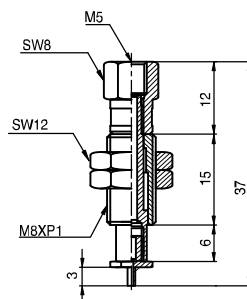
**L506TS**



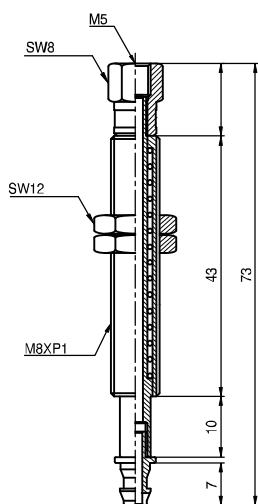
**L506TU**



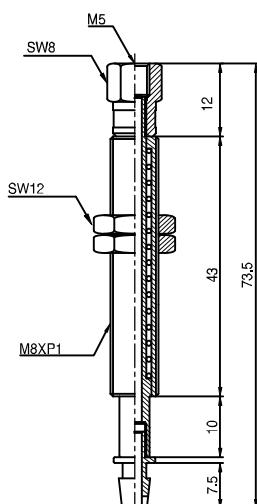
**L506TM**



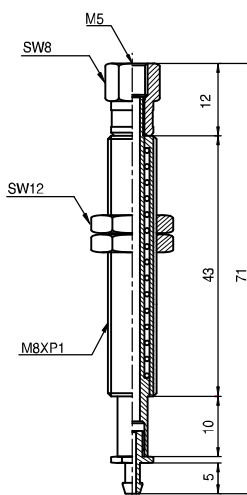
**L510LTX**



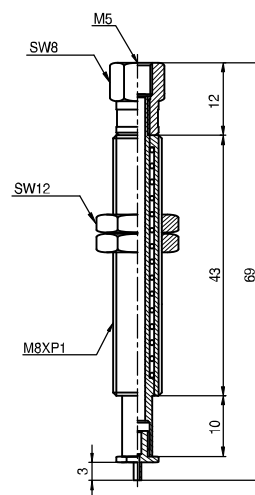
**L510LTS**



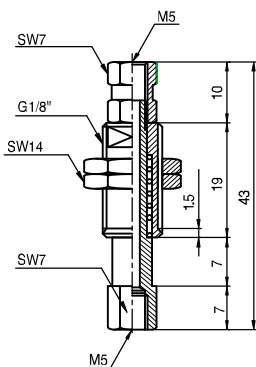
**L510LTU**



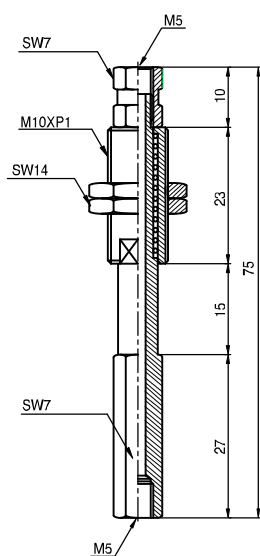
**L510LTM**



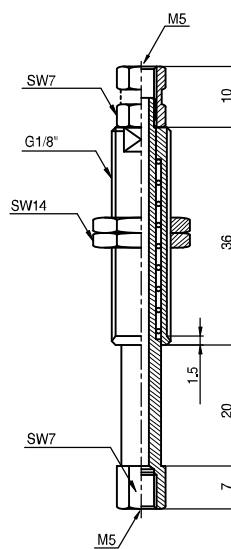
**L507T**



**L515T**



**L520TF**



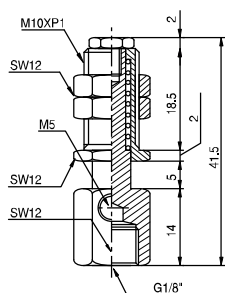
[ Measure unit : mm ]

## 18-Series

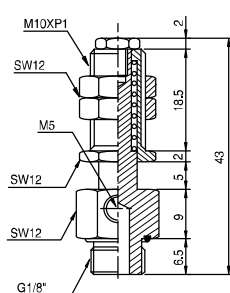
### Dimensional Information

Model	Thread Size	Stroke (mm)	Weight (g)
L1805F	G1/8" - female	5	24
L1805M	G1/8" - male	5	28
L1810T	G1/8" - male	10	44
L1810TS-M10F	M10 - female	10	67
L1810TS	G1/8" - male	10	73
L1810TSE	G1/8" - male	10	93
L1815	G1/8" - male	15	86
L1815T	G1/8" - male	15	36
L1820T	G1/8" - male	20	56
L1820TS	G1/8" - male	20	83
L1830	G1/8" - male	30	54
L1830T	G1/8" - male	30	60
L1830TS	G1/8" - male	30	130
L1850	G1/8" - male	50	105
L1850T	G1/8" - male	50	66

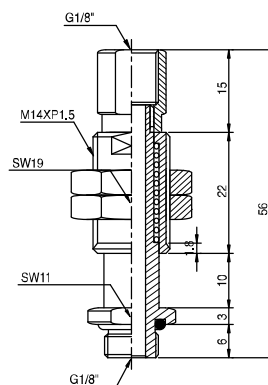
**L 1805F**



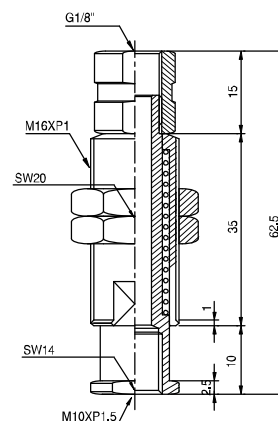
**L 1805M**



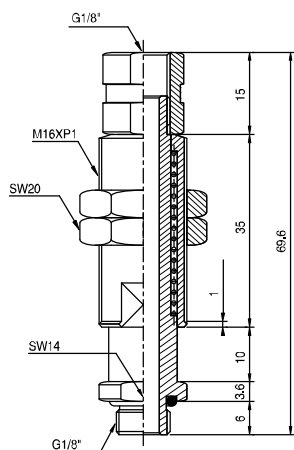
**L 1810T**



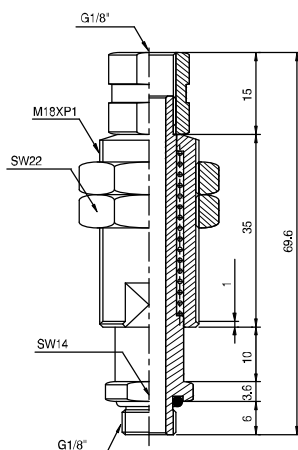
**L 1810TS - M10F**



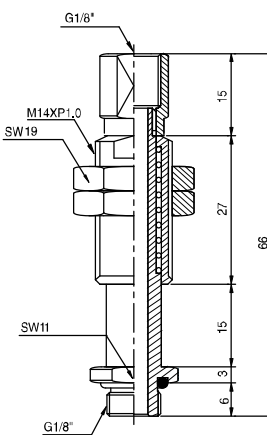
**L 1810TS**



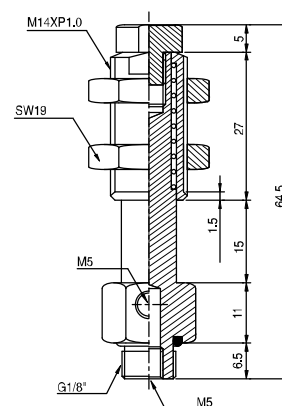
**L 1810TSE**



**L 1815T**



**L 1815**

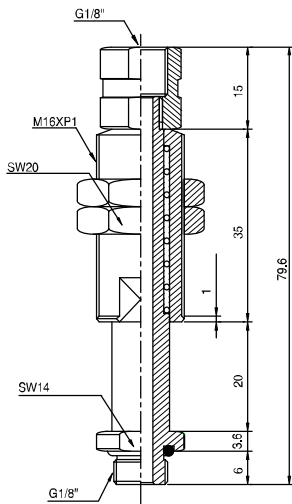


[ Measure unit : mm ]

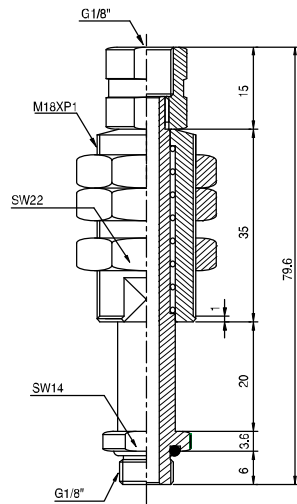
## Dimensional Information

SUCTION  
CUPS

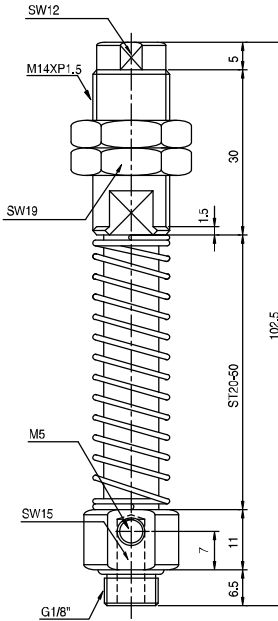
**L 1820T**



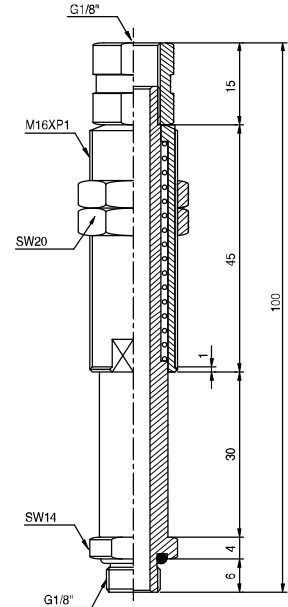
**L 1820TS**



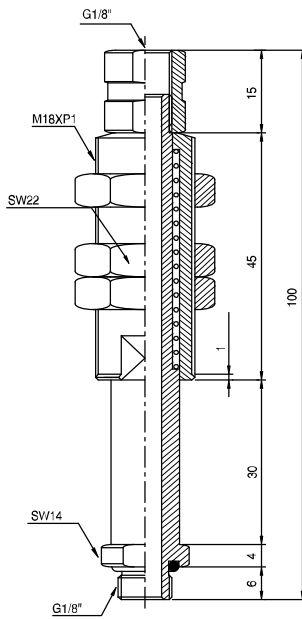
**L 1830**



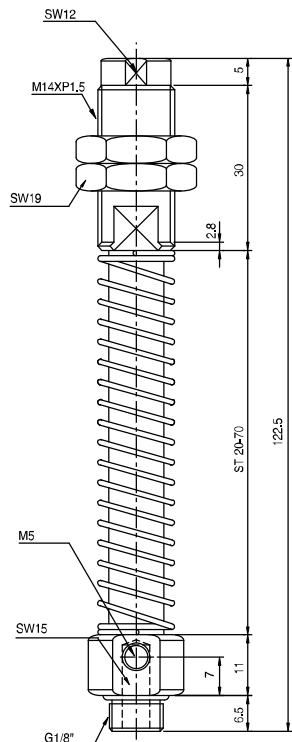
**L 1830T**



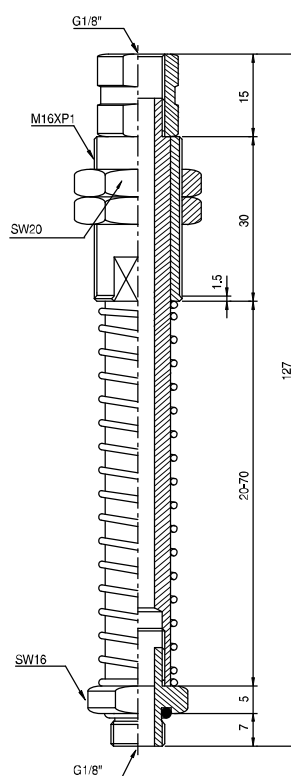
**L 1830TS**



**L 1850**



**L 1850T**



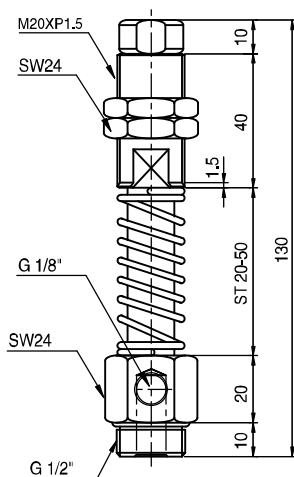
[ Measure unit : mm ]

## 12-Series

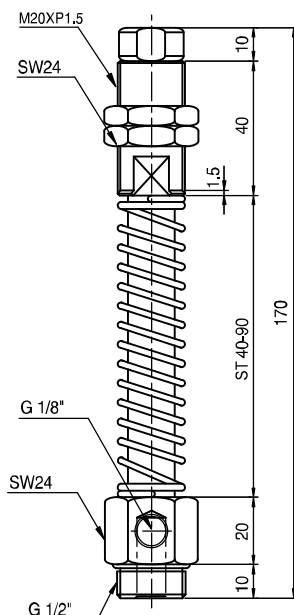
### Dimensional Information

Model	Thread Size	Stroke (mm)	Weight (g)
L1230	G 1/2"	30	289
L1250	G 1/2"	50	350
L1230T	G 1/2"	30	241
L1250T	G 1/2"	50	156

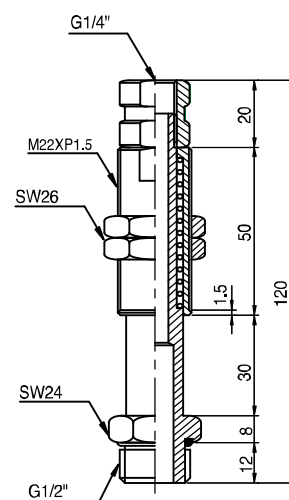
**L 1230**



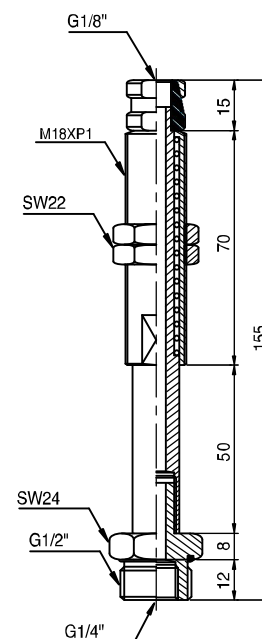
**L 1250**



**L 1230T**



**L 1250T**



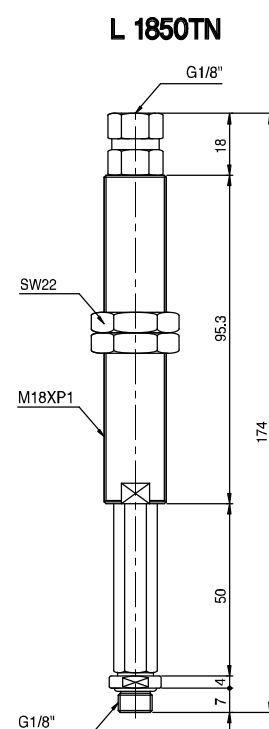
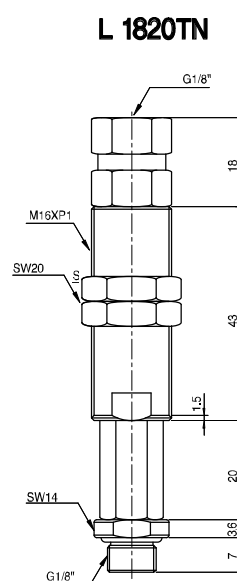
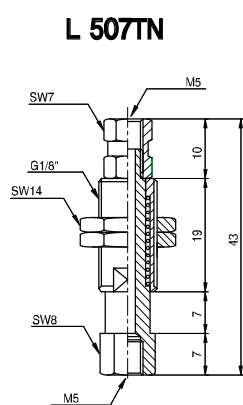
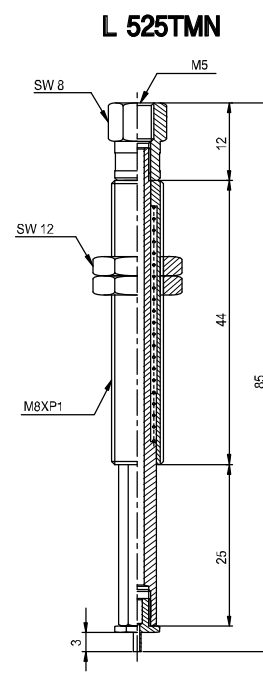
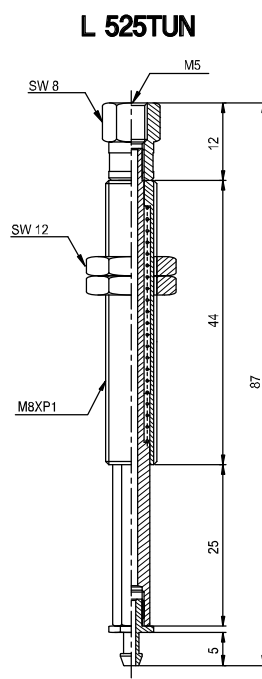
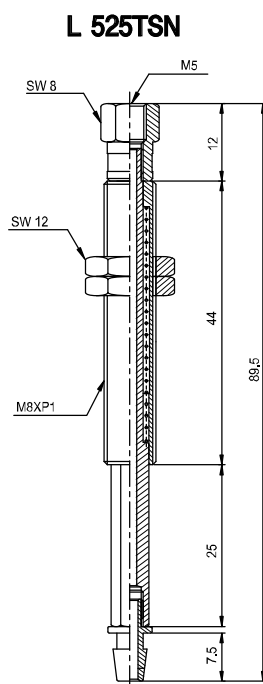
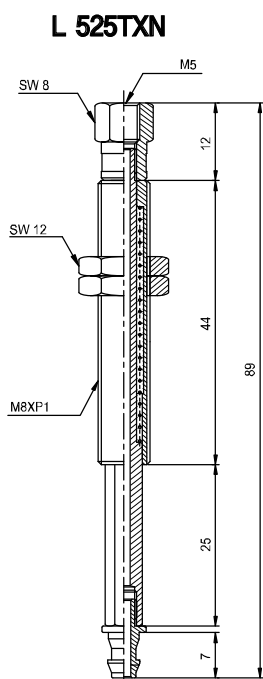
[ Measure unit : mm ]

## ■ Non Rotating Level Compensator

### Dimensional Information

Model	Thread Size	Stroke (mm)	Weight (g)
L525TXN	VB6X,VU1.5X,VU2X,VU4X	25	20.7
L525TSN	VU10,VU15,VF15,VB10,VB12,VB15	25	20.6
L525TUN	VU4,VU6,VU8,VB5,VB8	25	20.3
L525TMN	VU2,VU3	25	20.1
L507TN	M5-female	7	18
L1820TN	G1/8"-male	20	54
L1850TN	G1/8"-male	50	140

SUCTION CUPS



[ Measure unit : mm ]